



# Vaccine Navigator Guide

## Provider Dashboard

### Dashboard Login Info

Username and password will be provided in a separate communication

**Purpose** This dashboard provides Regional Implementation Teams (RITs) with insight around how many residents are interested in, eligible, and scheduled for the vaccine for planning and reporting purposes

**Users** The **RITs** will use this for demand planning purposes

**\*Notes** All data shown is illustrative

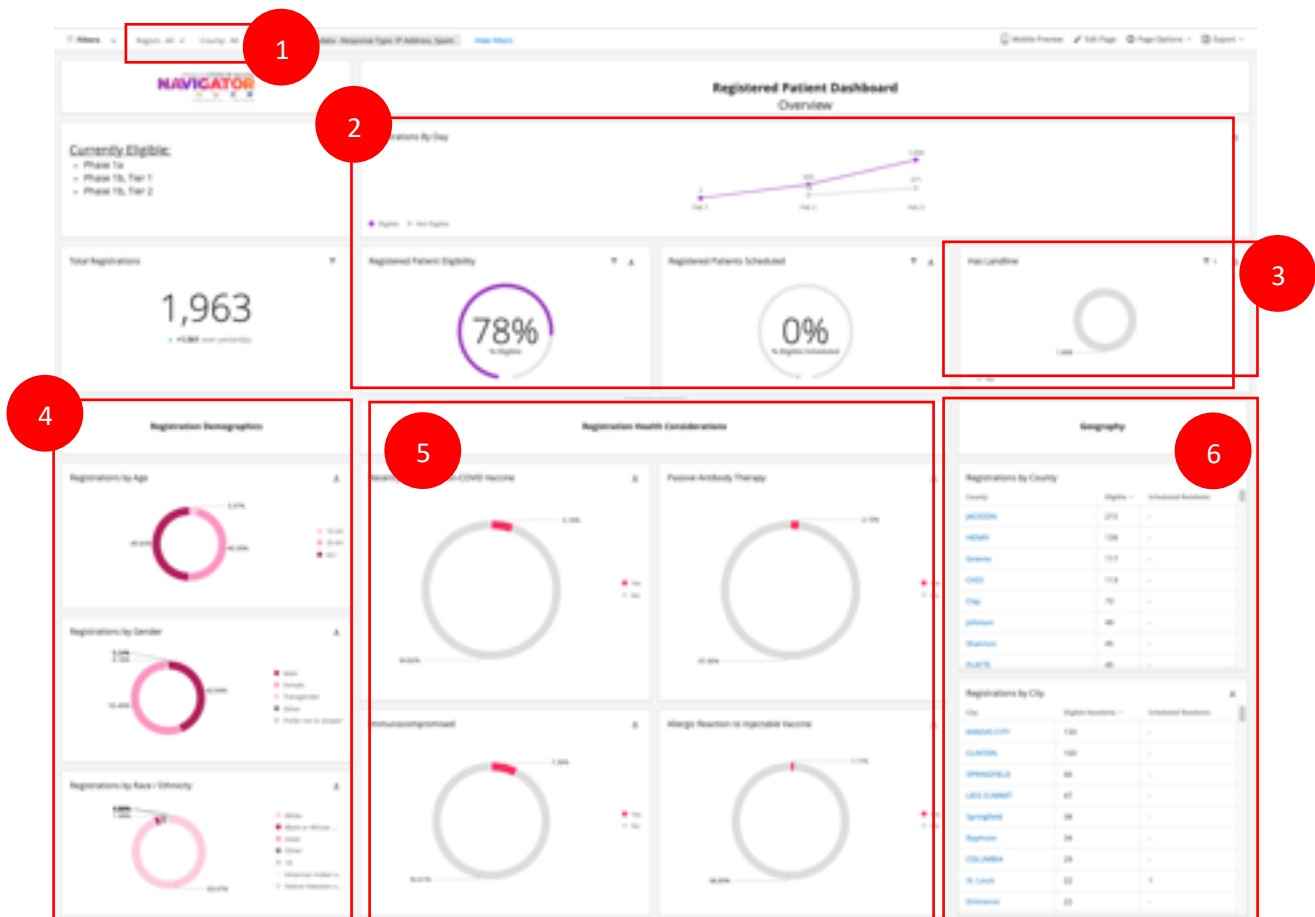
# Missouri Department of Health & Senior Services

## Vaccine Navigator

### Provider Dashboard Guide

#### Overview Page

- Enables RITs to see who has registered in the Vaccine Navigator for planning and reporting purposes
- Provides RITs with information on how many people are interested in getting the vaccine and how many are scheduled
- Breaks down registered residents by demographics, self-reported health conditions, and geography



1. Filter for Region/County – use this to filter for your respective Region/County
2. Eligible and Scheduled Patients
  - Registrations by Day - # of eligible and non eligible residents who registered per day for the past week
  - Registered Patient Eligibility – what % of registered patients are eligible to receive the vaccine based on Missouri’s current phase/tier qualifications
  - Registered Patients Scheduled – what % of registered patients have scheduled a vaccine appointment

## **Missouri Department of Health & Senior Services**

### Vaccine Navigator

#### Provider Dashboard Guide

3. Has Landline – # of residents who have a landline
  - Yes – has landline
  - No – does not have landline
4. Registration Demographics
  - Registrations by Age
  - Registrants by Gender
  - Registrants by Race/Ethnicity
5. Registration Health Considerations
  - Recently Received Non-COVID Vaccine
  - Passive Antibody Therapy
  - Immunocompromised
  - Allergic Reaction to Injectable Vaccine
6. Geography
  - Registrations by County
  - Registrations by City

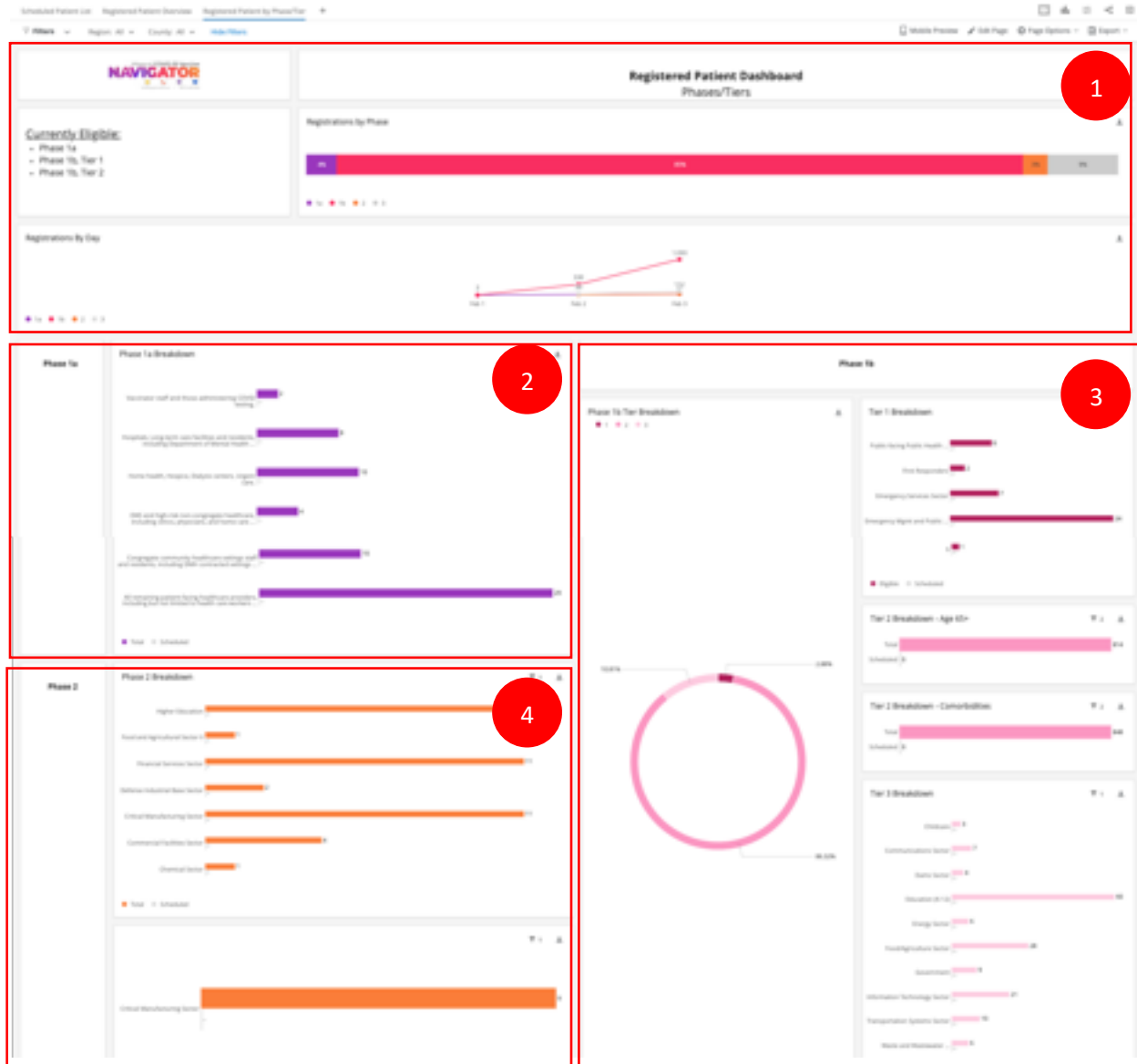
# Missouri Department of Health & Senior Services

## Vaccine Navigator

### Provider Dashboard Guide

#### Phase/Tiers Page

- Provides RITs with information on how many registrations qualify for which phase/tier



1. Phase Breakdown
  - Registrations by Phase
  - Registrations by Day
2. Phase 1a Breakdown
3. Phase 1b Breakdown
4. Phase 2 Breakdown